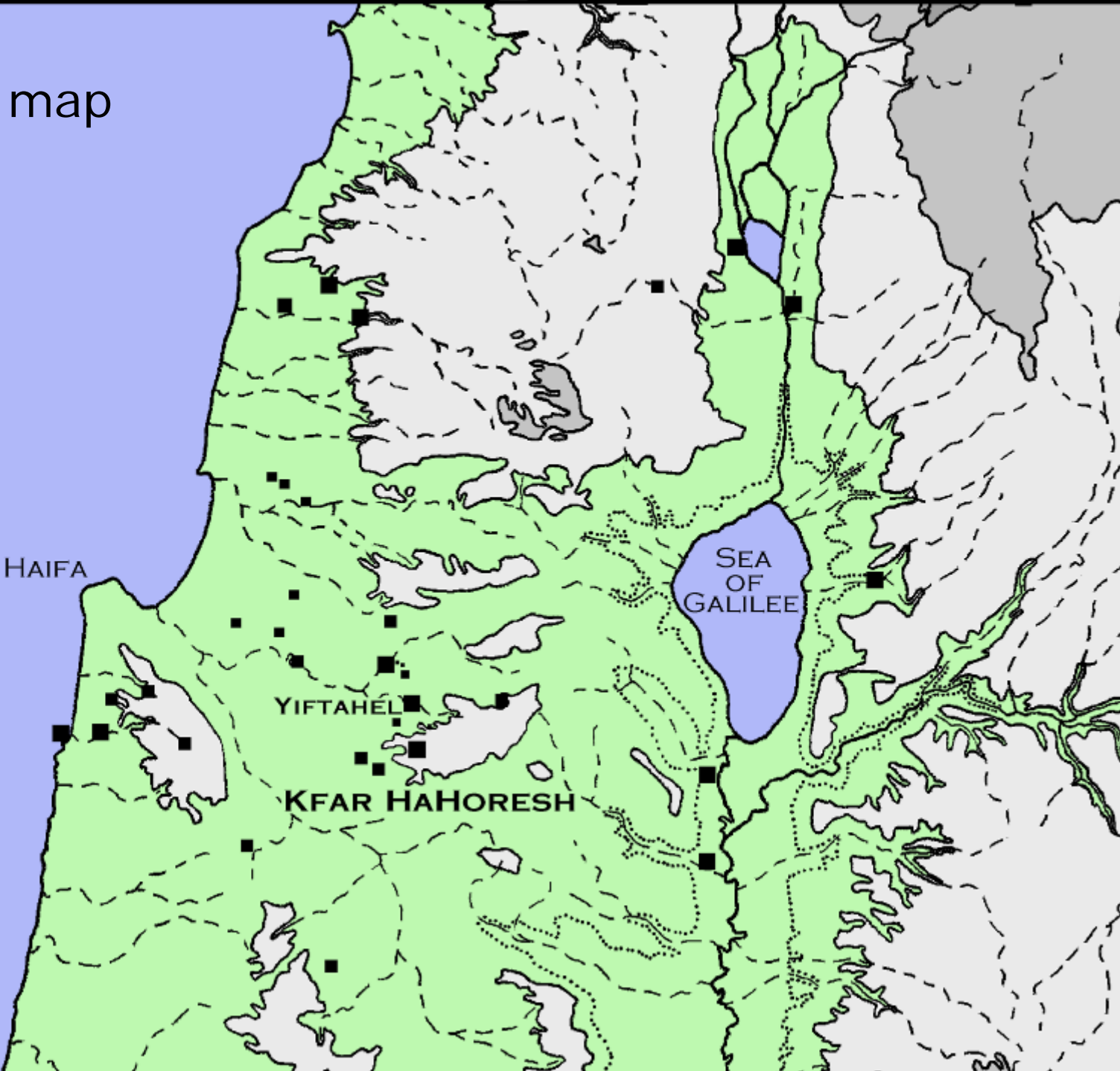
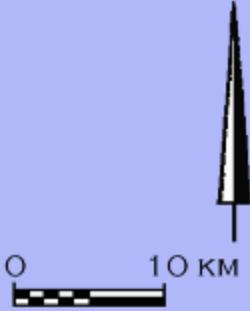
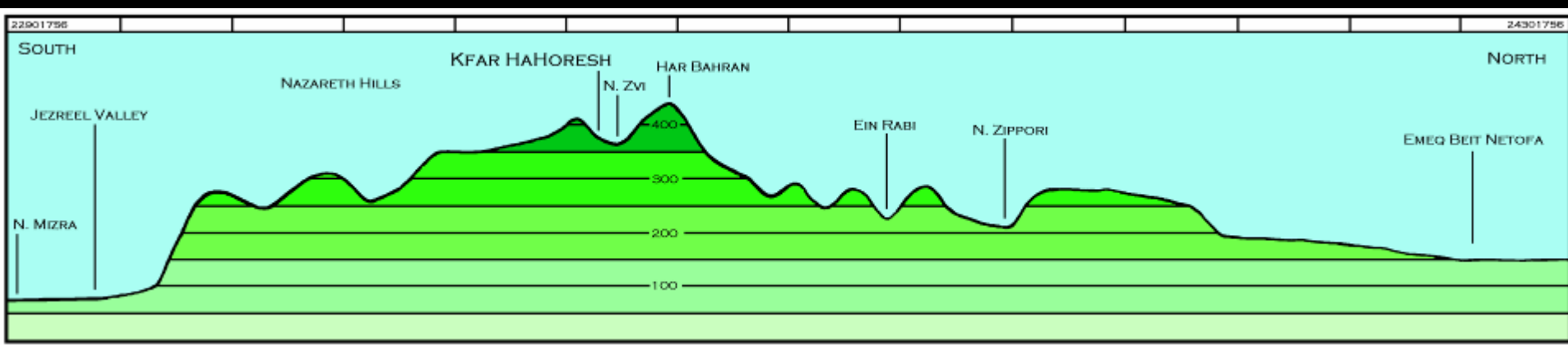


Locator map





The Nazareth hills





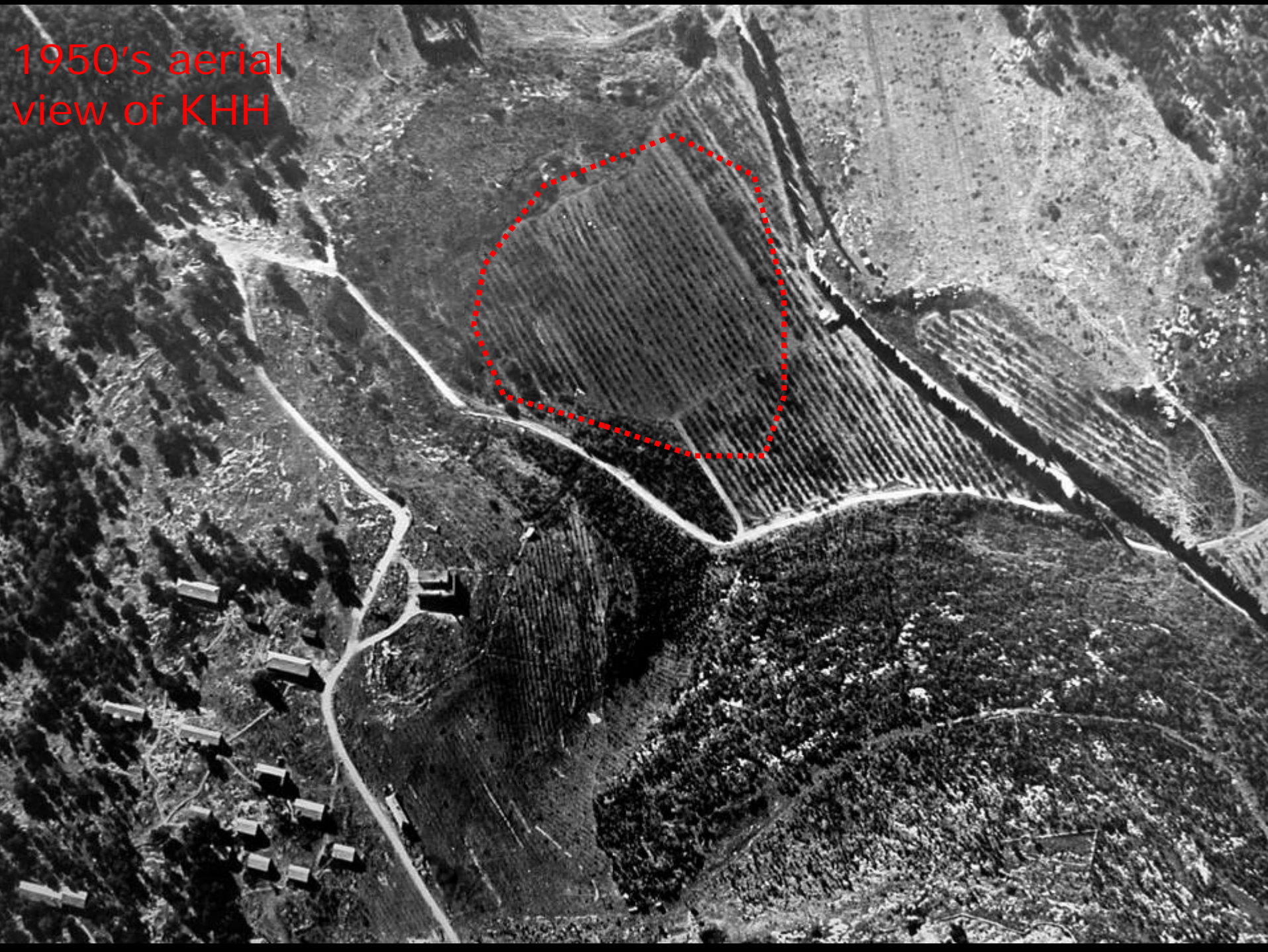
View northwards from Har Bahran

View from Har Zameret
southwards across the
Jezreel valley to Mt.
Carmel. KHH is located in
the centre of the photo

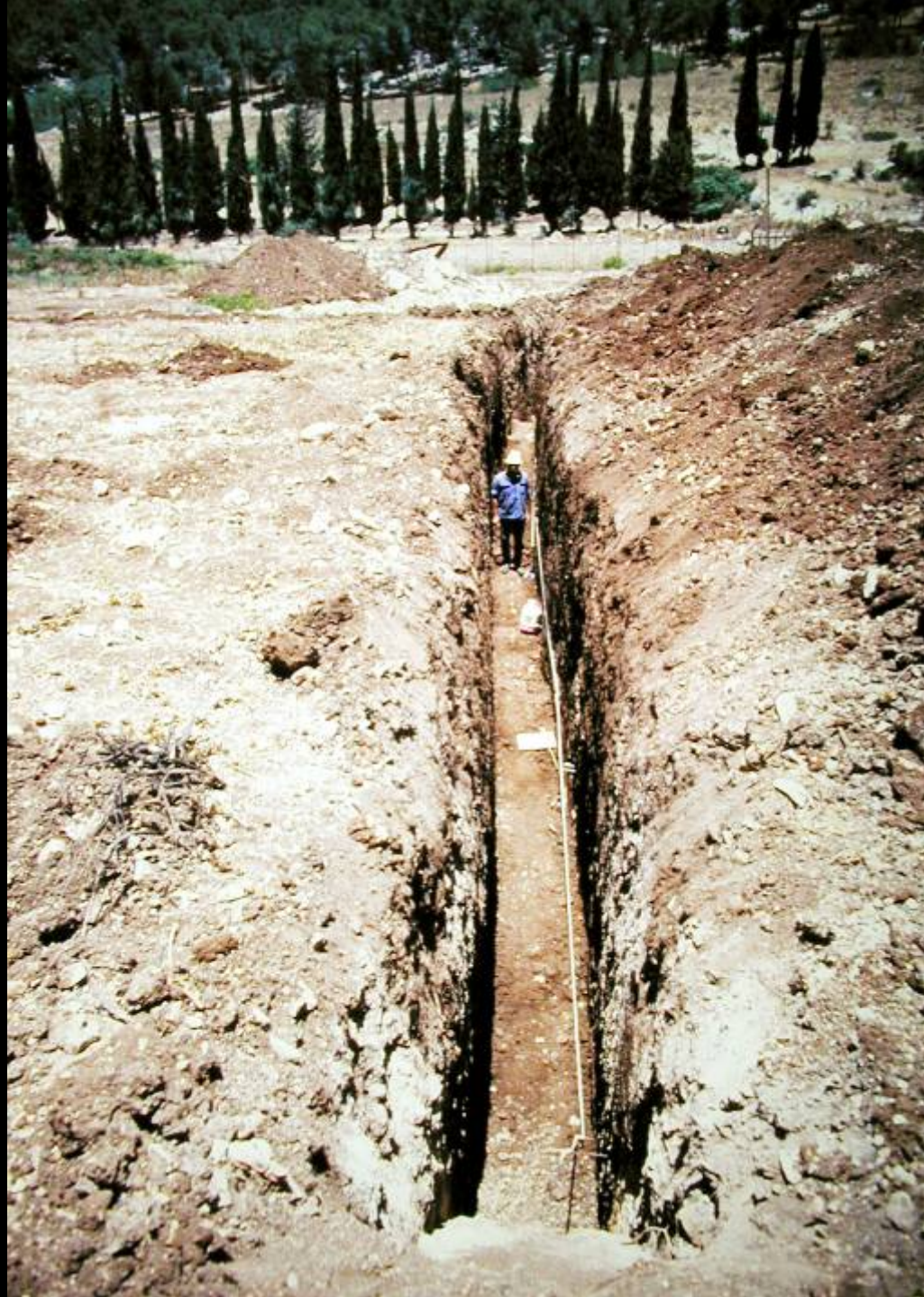




1950's aerial
view of KHH



1991: Trench I





Homo I & gazelle
carcass upon discovery
in Trench I





Initial excavations in 1991

Aerial View of excavations in 2008

