

# Finds

## 1. Chipped Stone tools



Refitted bidirectional  
(naviform) core

## Naviform blades



*Lame à crête*



1

2

3



Helwan points

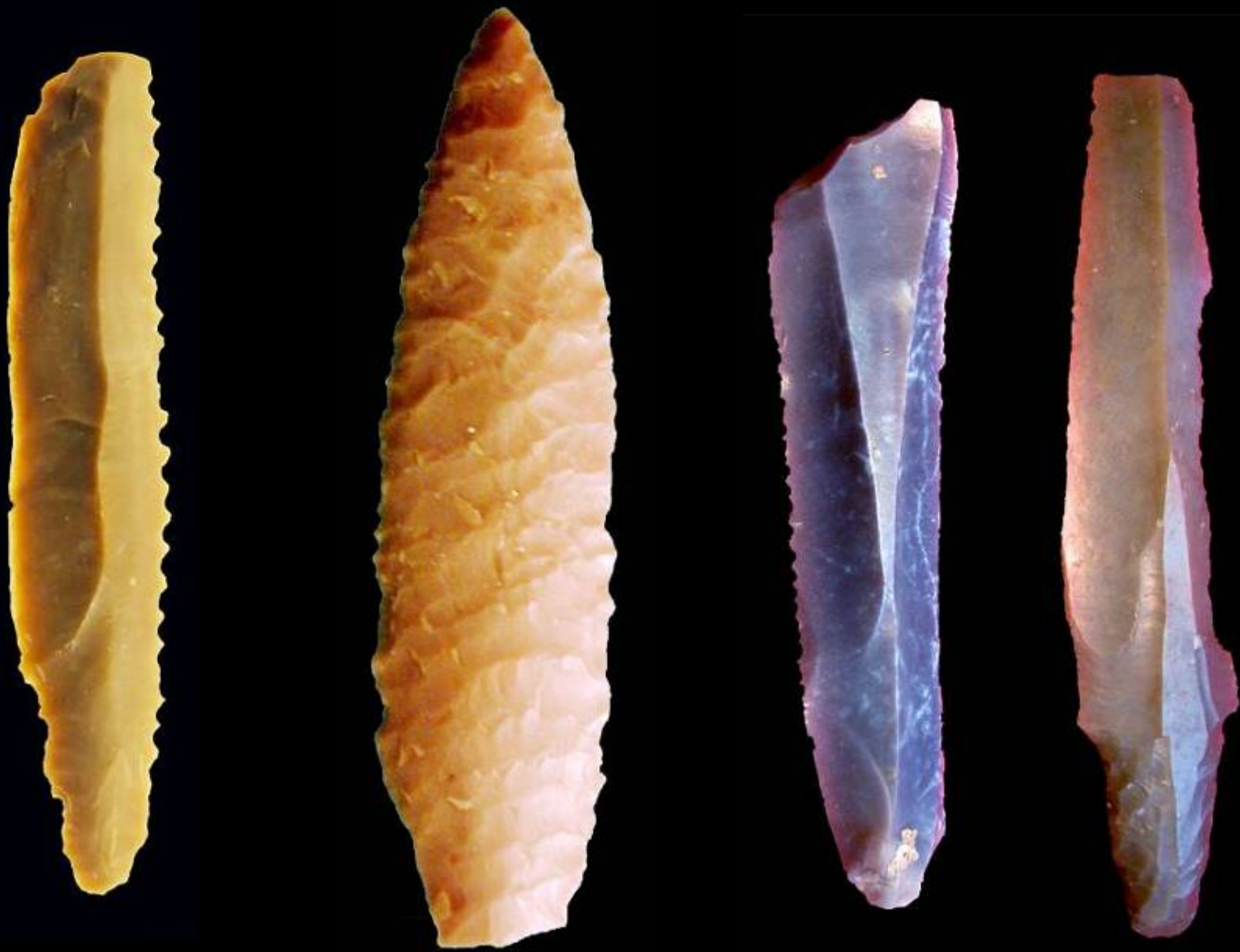
Jericho points



Amuq points with Abu  
Gosh retouch





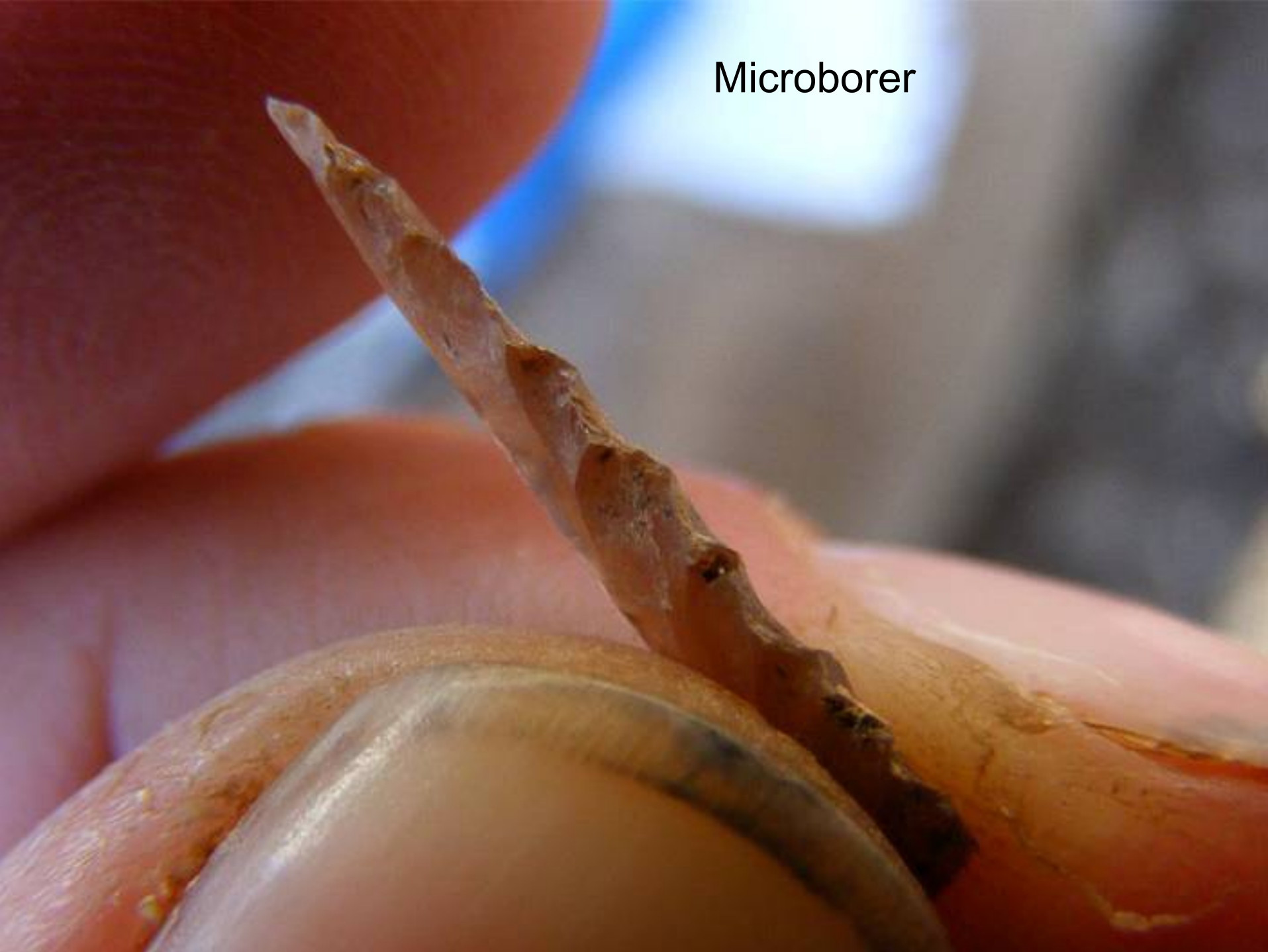


Sickle blades





Microborer



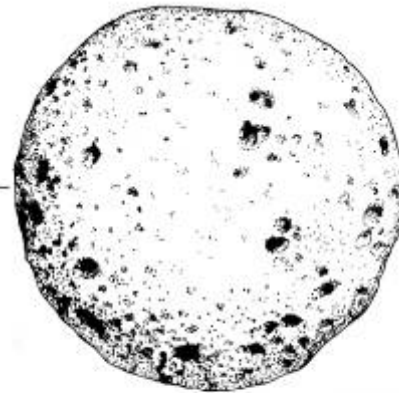
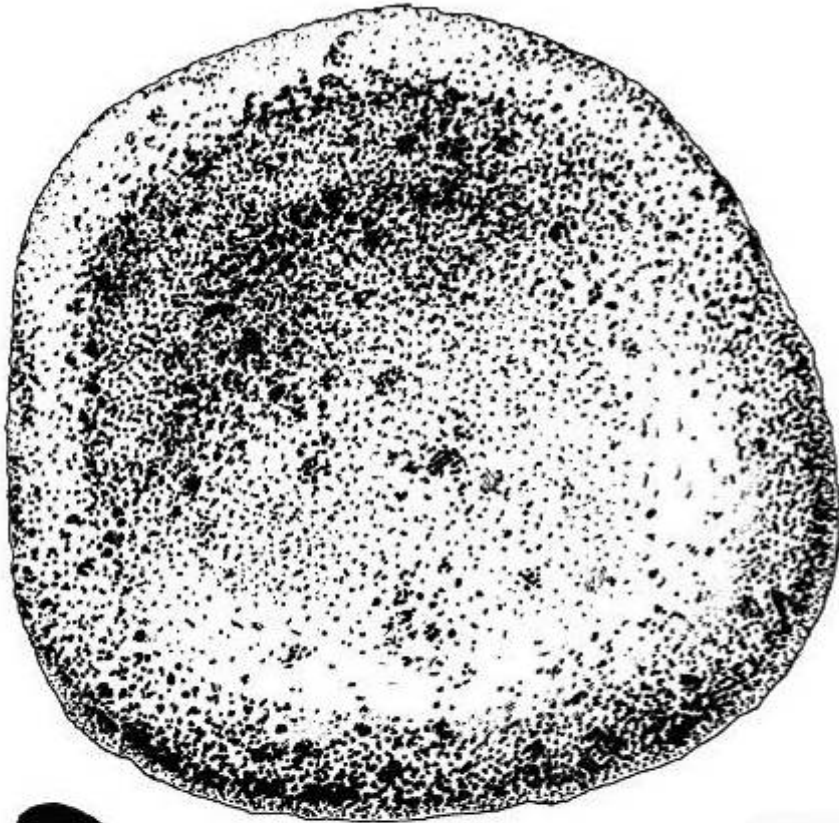
Massive borer

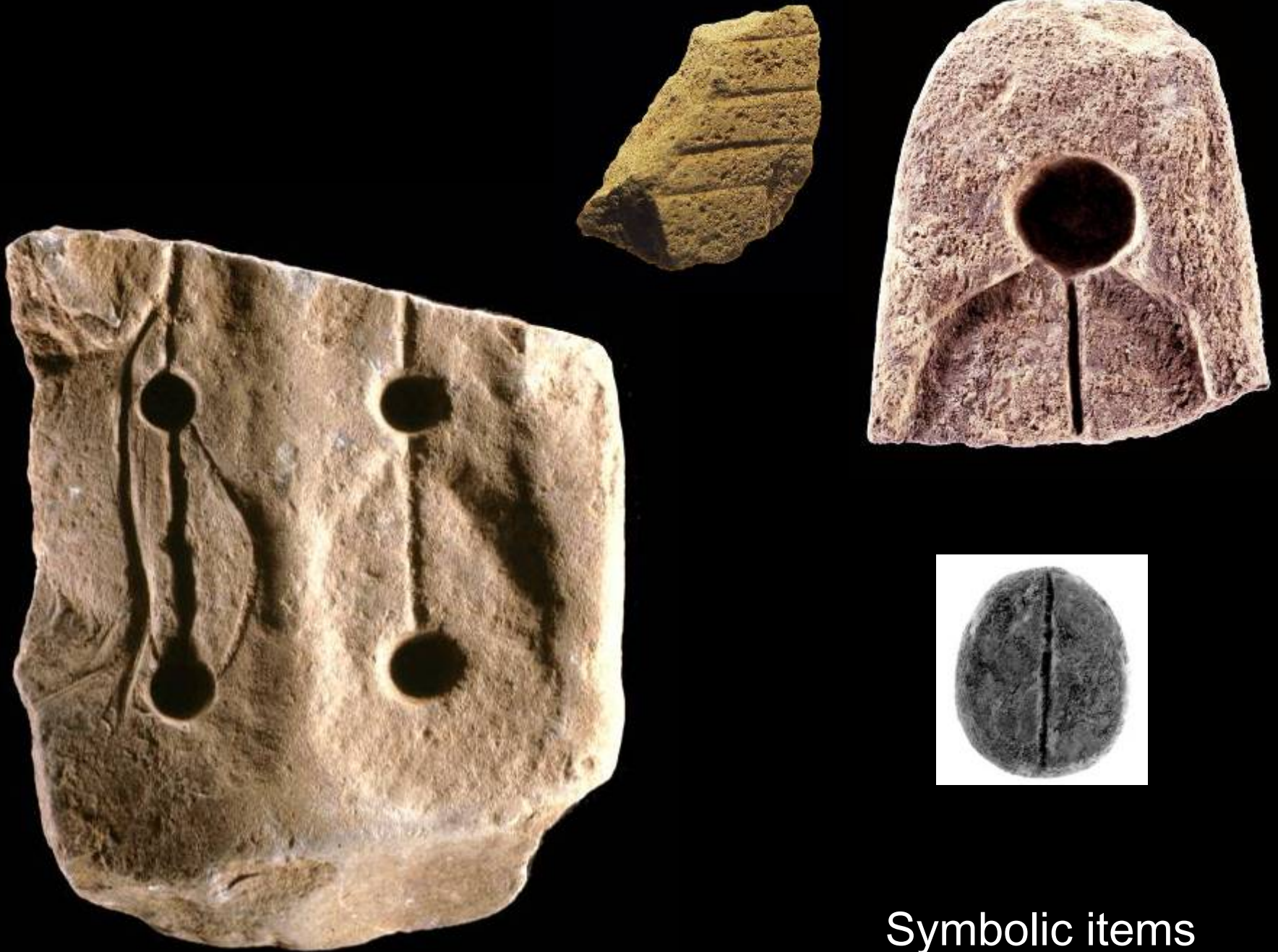


# Bifacials



# Groundstone tools





Symbolic items

# Phallic representations



3CM

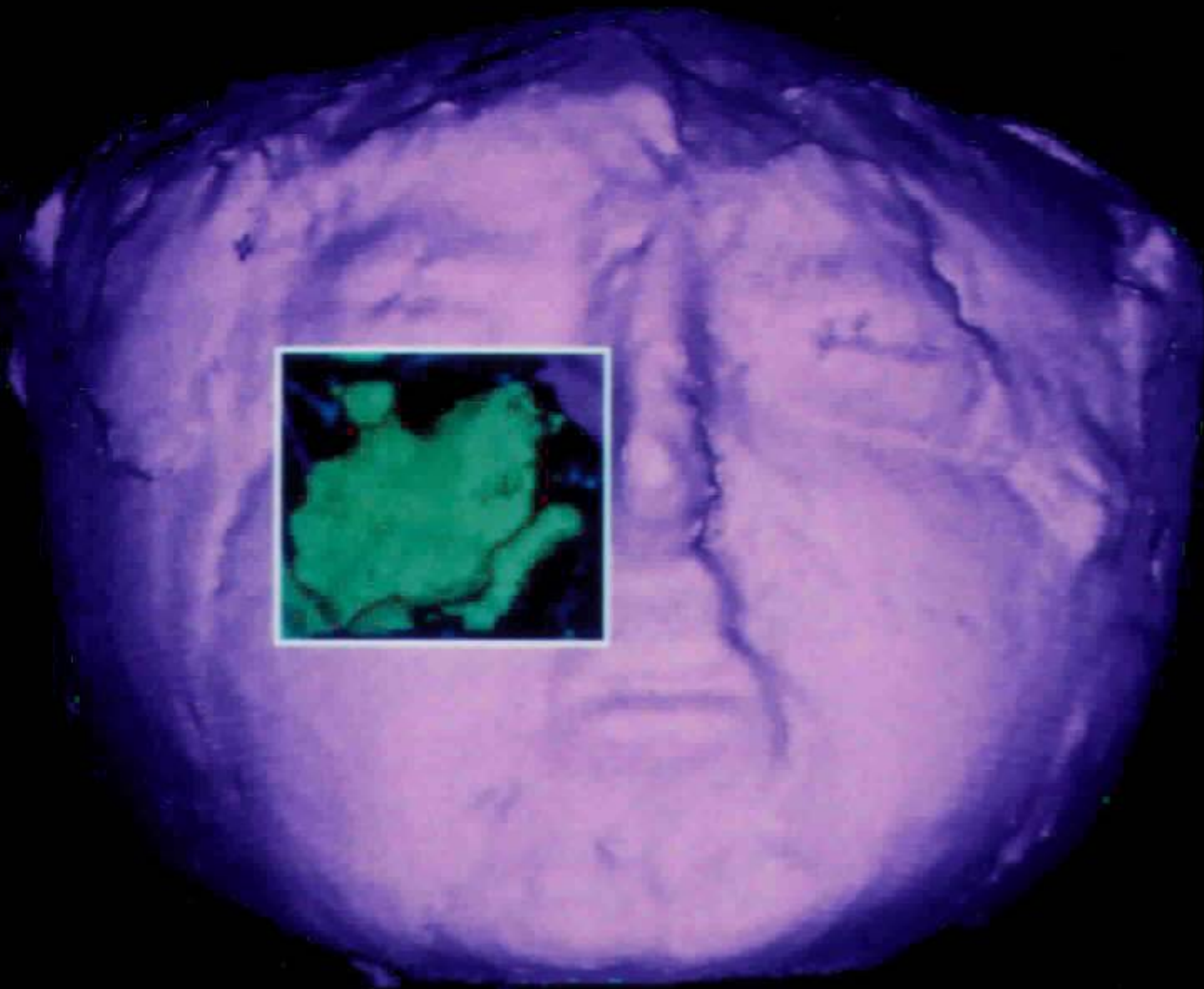


Figurines



Plastered skull  
(Homo I)





# Votive axes, pendants, beads



3CM







Marine molluscs





Clay & pottery