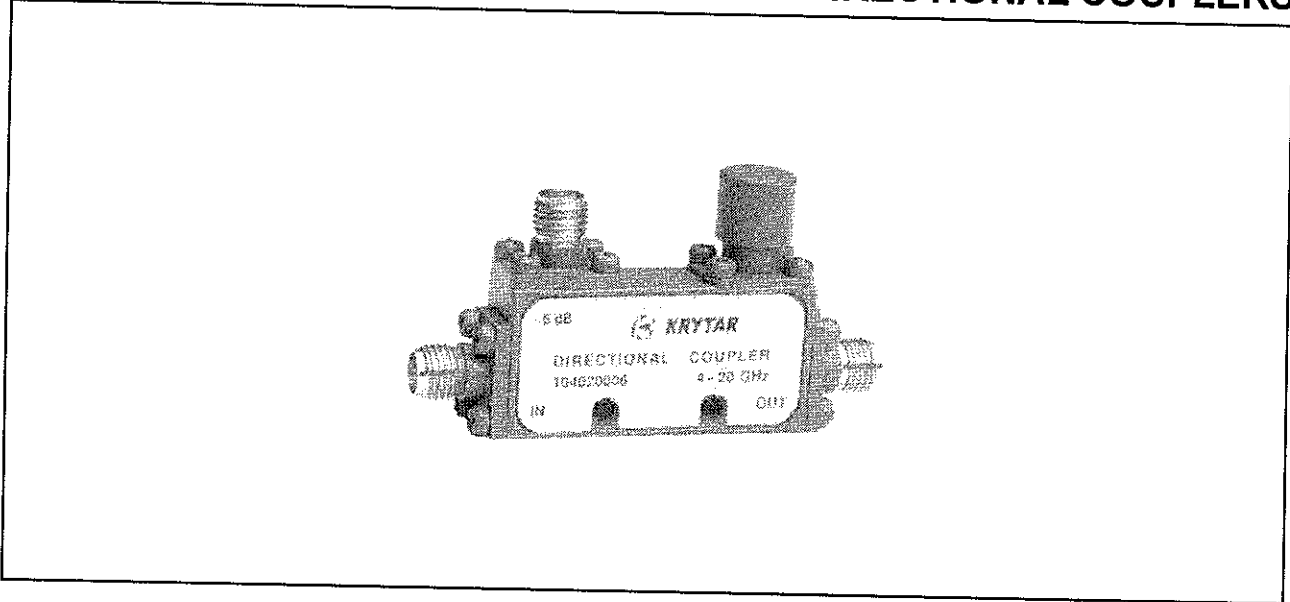




**MODELS 104020006, 104020010  
104020020 & 104020030**

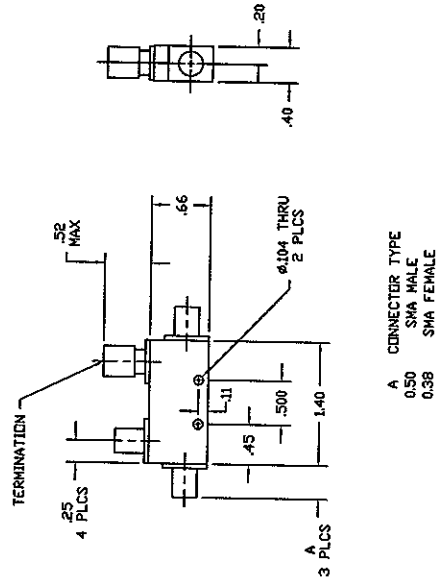
**4-20 GHz DIRECTIONAL COUPLERS**



**SPECIFICATIONS**

<b>FREQUENCY RANGE</b>		4-20 GHz
<b>COUPLING</b> (with respect to output)		
Nominal	104020006	6 ± 0.5 dB
	104020010	10 ± 0.5 dB
	104020020	20 ± 1.0 dB
Frequency Sensitivity		± 0.3 dB
Nominal	104020030	30 ± 1.0 dB
Frequency Sensitivity		± 0.7 dB
<b>DIRECTIVITY</b>		> 15 dB
<b>MAXIMUM VSWR</b> (any port)		1.35
<b>INSERTION LOSS</b>	104020006	< 1.9 dB
(includes coupled power)	104020010	< 1.0 dB
	104020020	< 0.6 dB
	104020030	< 0.6 dB
<b>POWER RATING</b> (input)		
Average		20 W
Peak		3 KW
<b>STANDARD CONNECTORS</b>		SMA Female
Optional:	SMA Male	
<b>WEIGHT</b> (ounces)		1.0
<b>OPERATING TEMPERATURE</b>		-54° to +85° C

**DIMENSIONS**



A CONNECTOR TYPE  
0.50 SMA MALE  
0.38 SMA FEMALE

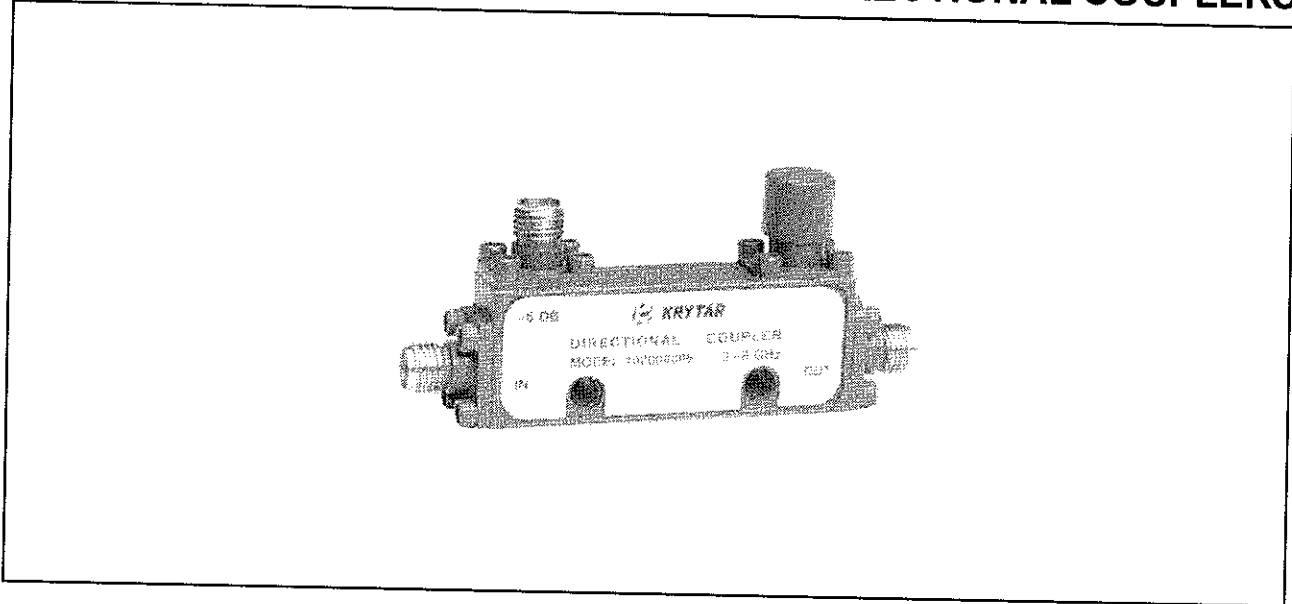


1288 Anvilwood Ave. • Sunnyvale, CA 94089 • (408) 734-5999 • FAX: (408) 734-3017  
Toll Free 1 (877) 734-5999 • www.krytar.com



**MODELS 102008006  
102008010 & 102008020**

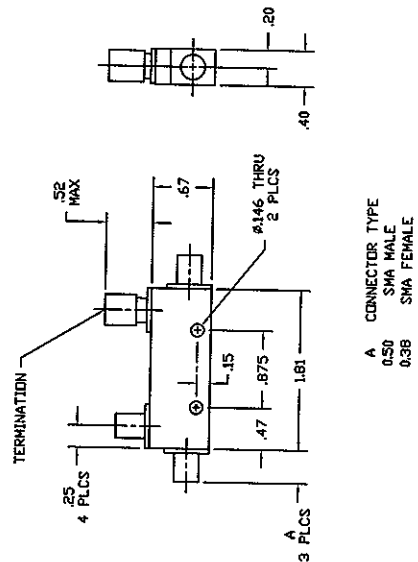
**2-8 GHz DIRECTIONAL COUPLERS**



**SPECIFICATIONS**

<b>FREQUENCY RANGE</b>		2-8 GHz
<b>COUPLING</b> (with respect to output)		
Nominal	102008006	6 ± 0.5 dB
	102008010	10 ± 0.5 dB
	102008020	20 ± 1.0 dB
Frequency Sensitivity		± 0.25 dB
<b>DIRECTIVITY</b>		> 20 dB
<b>MAXIMUM VSWR</b> (any port)		1.20
<b>INSERTION LOSS</b>	102008006	< 1.60 dB
(includes coupled power)	102008010	< 0.75 dB
	102008020	< 0.35 dB
<b>POWER RATING</b> (input)		
Average		50 W
Peak		3 KW
<b>STANDARD CONNECTORS</b>		SMA Female
Optional:	SMA Male	
<b>WEIGHT</b> (ounces)		1.2
<b>OPERATING TEMPERATURE</b>		-54° to +85° C

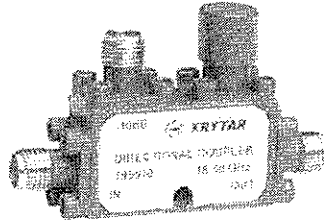
**DIMENSIONS**



1288 Anvilwood Ave. • Sunnyvale, CA 94089 • (408) 734-5999 • FAX: (408) 734-3017  
 Toll Free 1 (877) 734-5999 • www.krytar.com



# NARROW BAND DIRECTIONAL COUPLERS



## SPECIFICATIONS

MODEL	FREQUENCY RANGE (GHz)	COUPLING (WITH RESPECT TO OUTPUT) (dB)	FREQUENCY SENSITIVITY (dB)	DIRECTIVITY (dB Min)	VSWR (Max)	INSERTION LOSS (dB Max)	CONNECTOR TYPE (FEMALE)	WEIGHT (OZ.)		
100308010	0.3-8.0	10 ± 1.0	± 1.2	20	1.18	1.3	SMA	3.8		
100308016	0.3-8.0	16 ± 1.2	± 1.0	20	1.15	1.0				
100308030	0.3-8.0	30 ± 0.7	± 1.2	20	1.15	0.85				
100312410	0.3-12.4	10 ± 1.0	± 1.2	15	1.35	1.35				
100312416	0.3-12.4	16 ± 1.2	± 1.0	15	1.30	1.20				
100312430	0.3-12.4	30 ± 0.7	± 1.2	15	1.35	1.0				
120410	4.0-12.4	10 ± 0.5	± 0.3	15	1.35	0.9		SMA	1.0	
120420	4.0-12.4	20 ± 1.0	± 0.3	15	1.35	0.5				
120430	4.0-12.4	30 ± 1.0	± 0.3	15	1.35	0.5				
120710	7.0-12.4	10 ± 0.5	± 0.3	15	1.35	0.9				
120720	7.0-12.4	20 ± 1.0	± 0.3	15	1.35	0.5				
120730	7.0-12.4	30 ± 1.0	± 0.3	15	1.35	0.5				
181210	12.4-18.0	10 ± 0.5	± 0.3	15	1.35	1.0				
181220	12.4-18.0	20 ± 1.0	± 0.3	15	1.35	0.6				
181230	12.4-18.0	30 ± 1.0	± 0.7	15	1.35	0.6				
262206	18.0-26.5	06 ± 0.8	± 0.3	13	1.40	1.6	3.5 mm			1.1
262210	18.0-26.5	10 ± 0.5	± 0.3	14	1.40	1.3				
262220	18.0-26.5	20 ± 1.0	± 0.3	14	1.40	0.8				
262230	18.0-26.5	30 ± 1.0	± 0.35	14	1.40	0.8				
184010	18.0-40.0	10 ± 0.7	± 0.4	12	1.70	1.7	2.4 mm (For 2.92 mm add "K" to end of Model #)			1.0
184020	18.0-40.0	20 ± 1.0	± 0.4	12	1.70	1.3				
264006	26.5-40.0	06 ± 0.7	± 0.65	10	1.80	2.4				
264010	26.5-40.0	10 ± 0.7	± 0.4	12	1.70	1.7				
264020	26.5-40.0	20 ± 1.0	± 0.4	12	1.70	1.3				
195010	18.0-50.0	10 ± 0.7	± 0.5	10	1.80	1.9		2.4 mm		
195020	18.0-50.0	20 ± 1.0	± 0.5	10	1.80	1.5				
265010	26.5-50.0	10 ± 0.7	± 0.5	10	1.80	1.9				
265020	26.5-50.0	20 ± 1.0	± 0.5	10	1.80	1.5				

OPERATING TEMPERATURE

-54° to +85° C

POWER RATING (input)

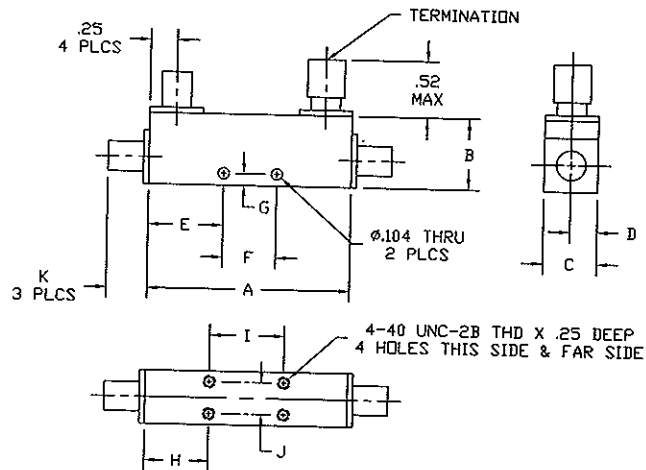
Average  
Peak

20 W  
3 KW

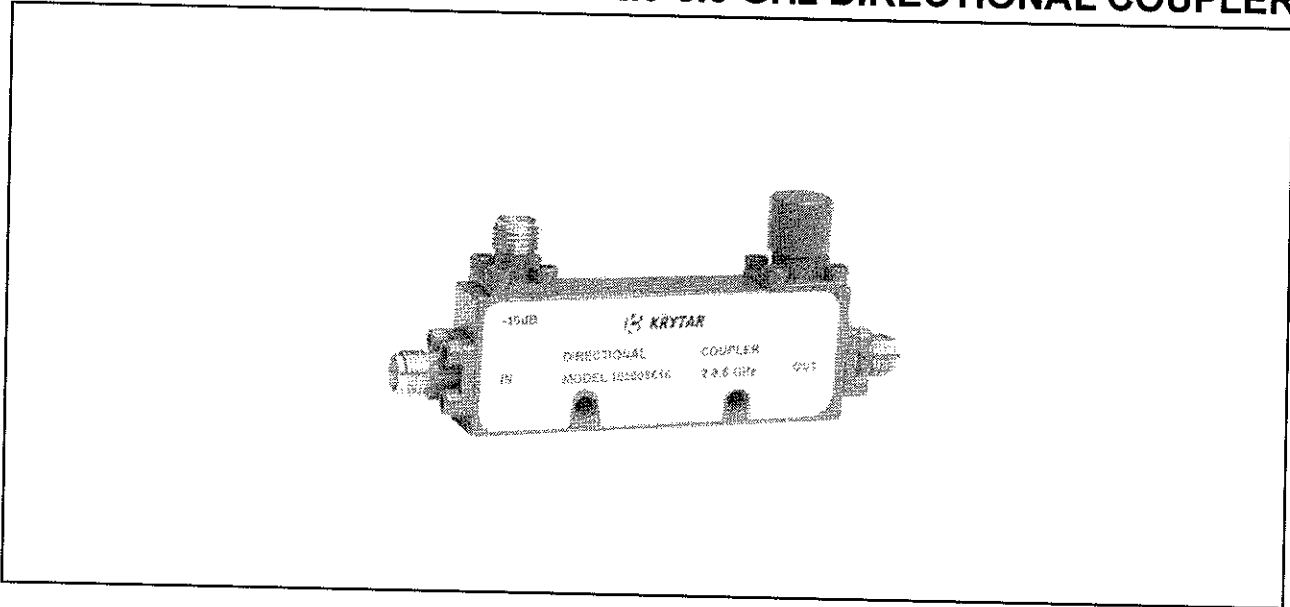


1288 Anvilwood Ave. • Sunnyvale, CA 94089 • (408) 734-5999 • FAX: (408) 734-3017  
Toll Free 1 (877) 734-5999 • www.krytar.com

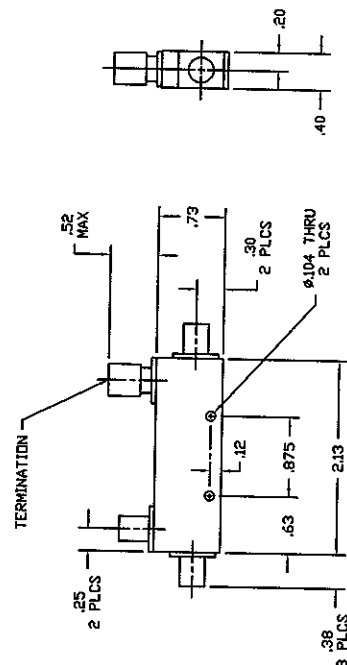
MODEL	A	B	C	D	E	F	G	H	I	J
100308010	6.00	.73	.50	.25	-	-	-	1.80	2.400	.30
100308016	6.00	.73	.50	.25	-	-	-	1.80	2.400	.30
100308030	6.00	.73	.50	.25	-	-	-	1.80	2.400	.30
100312410	6.00	.73	.50	.25	-	-	-	1.80	2.400	.30
100312416	6.00	.73	.50	.25	-	-	-	1.80	2.400	.30
100312430	6.00	.73	.50	.25	-	-	-	1.80	2.400	.30
120410	1.40	.66	.40	.20	.45	.500	.11	-	-	-
120420	1.40	.66	.40	.20	.45	.500	.11	-	-	-
120430	1.40	.66	.40	.20	.45	.500	.11	-	-	-
120710	1.40	.66	.40	.20	.45	.500	.11	-	-	-
120720	1.40	.66	.40	.20	.45	.500	.11	-	-	-
120730	1.40	.66	.40	.20	.45	.500	.11	-	-	-
181210	1.40	.66	.40	.20	.45	.500	.11	-	-	-
181220	1.40	.66	.40	.20	.45	.500	.11	-	-	-
181230	1.40	.66	.40	.20	.45	.500	.11	-	-	-
262206	1.12	.64	.53	.26	.56	0	.09	-	-	-
262210	1.12	.64	.53	.26	.56	0	.09	-	-	-
262220	1.12	.64	.53	.26	.56	0	.09	-	-	-
262230	1.12	.64	.53	.26	.56	0	.09	-	-	-
184010	1.12	.62	.40	.20	.56	0	.09	-	-	-
184020	1.12	.62	.40	.20	.56	0	.09	-	-	-
264006	1.12	.62	.40	.20	.56	0	.09	-	-	-
264010	1.12	.62	.40	.20	.56	0	.09	-	-	-
264020	1.12	.62	.40	.20	.56	0	.09	-	-	-
195010	1.12	.62	.40	.20	.56	0	.09	-	-	-
195020	1.12	.62	.40	.20	.56	0	.09	-	-	-
265010	1.12	.62	.40	.20	.56	0	.09	-	-	-
265020	1.12	.62	.40	.20	.56	0	.09	-	-	-



CONNECTOR TYPE	K
SMA MALE	0.50
SMA FEMALE	0.38
3.5 mm MALE	0.46
3.5 mm FEMALE	0.48
2.92 mm MALE	0.50
2.92 mm FEMALE	0.38
2.4 mm MALE	0.50
2.4 mm FEMALE	0.38

**2.0-8.6 GHz DIRECTIONAL COUPLER**

**SPECIFICATIONS**

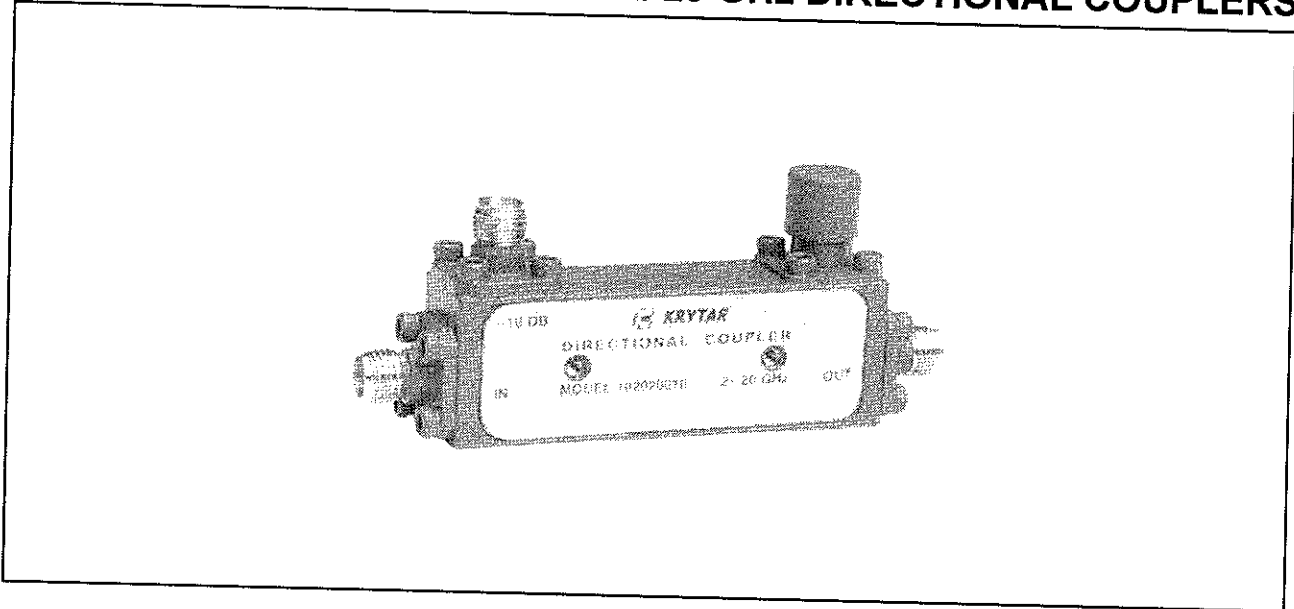
<b>FREQUENCY RANGE</b>	2.0-8.6 GHz
<b>COUPLING</b> (with respect to output)	
Nominal	16 ± 1.0 dB
Frequency Sensitivity	± 0.25 dB
<b>DIRECTIVITY</b>	> 20 dB
<b>MAXIMUM VSWR</b> (any port)	1.3
<b>INSERTION LOSS</b> (includes coupled power)	< 0.5 dB
<b>POWER RATING</b> (input)	
Average	50 W
Peak	3 KW
<b>STANDARD CONNECTORS</b>	SMA Female
<b>WEIGHT</b> (ounces)	1.2
<b>OPERATING TEMPERATURE</b>	-54° to +85° C

**DIMENSIONS**




**MODELS 102020010  
102020016 & 102020020**

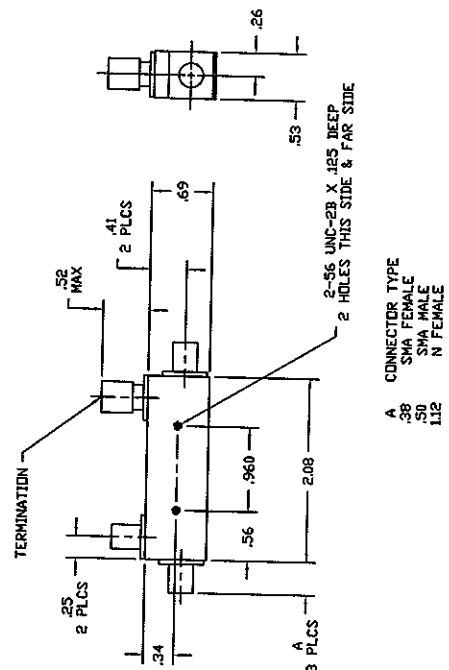
**2-20 GHz DIRECTIONAL COUPLERS**



**SPECIFICATIONS**

**DIMENSIONS**

<b>FREQUENCY RANGE</b>		2-20 GHz
<b>COUPLING</b> (with respect to output)		
Nominal	102020010	10 ± 0.5 dB
	102020016	16 ± 0.5 dB
	102020020	20 ± 1.0 dB
Frequency Sensitivity		± 0.3 dB
<b>DIRECTIVITY</b>		> 16 dB
<b>MAXIMUM VSWR</b> (any port)		1.35
<b>INSERTION LOSS</b>	102020010	< 1.3 dB
(includes coupled power)	102020016	< 1.0 dB
	102020020	< 0.9 dB
<b>POWER RATING</b> (input)		
Average		20 W
Peak		3 KW
<b>STANDARD CONNECTORS</b>		SMA Female
Optional:	SMA Male	
	N Female	
<b>WEIGHT</b> (ounces)		1.7
<b>OPERATING TEMPERATURE</b>		-54° to +85° C

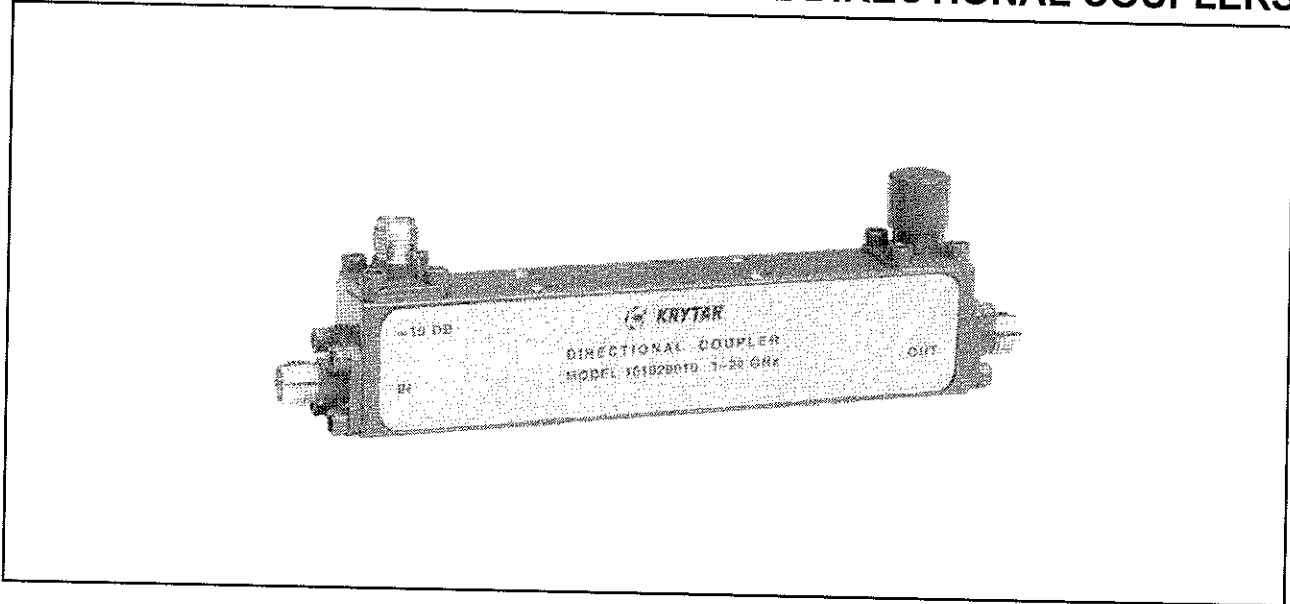


1288 Anvilwood Ave. • Sunnyvale, CA 94089 • (408) 734-5999 • FAX: (408) 734-3017  
Toll Free 1 (877) 734-5999 • www.krytar.com



**MODELS 101020010  
101020016 & 101020020**

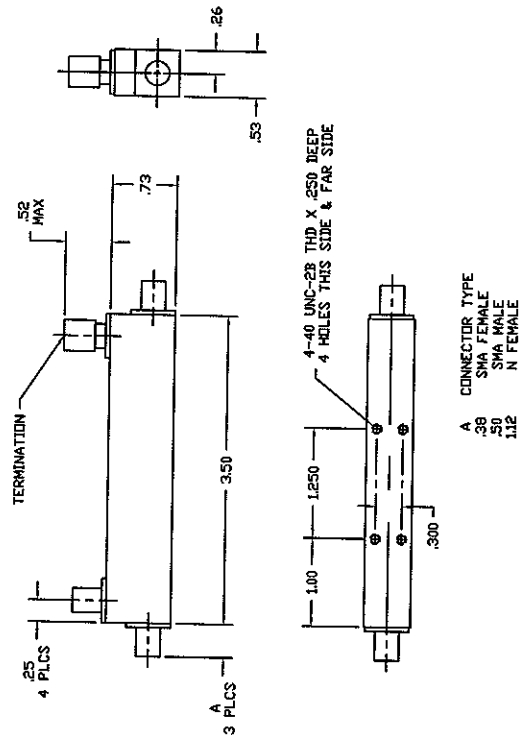
**1-20 GHz DIRECTIONAL COUPLERS**



**SPECIFICATIONS**

<b>FREQUENCY RANGE</b>		1-20 GHz
<b>COUPLING</b> (with respect to output)		
Nominal	101020010	10 ± 0.5 dB
	101020016	16 ± 0.5 dB
	101020020	20 ± 1.0 dB
Frequency Sensitivity		± 0.35 dB
<b>DIRECTIVITY</b>		> 16 dB
<b>MAXIMUM VSWR</b> (any port)		1.35
<b>INSERTION LOSS</b>	101020010	< 1.4 dB
(includes coupled power)	101020016	< 1.1 dB
	101020020	< 1.0 dB
<b>POWER RATING</b> (input)		
Average		20 W
Peak		3 KW
<b>STANDARD CONNECTORS</b>		SMA Female
Optional:	SMA Male	
	N Female	
<b>WEIGHT</b> (ounces)		2.6
<b>OPERATING TEMPERATURE</b>		-54° to +85° C

**DIMENSIONS**



1288 Anvilwood Ave. • Sunnyvale, CA 94089 • (408) 734-5999 • FAX: (408) 734-3017  
Toll Free 1 (877) 734-5999 • www.krytar.com