

Rev: May 24, 2011



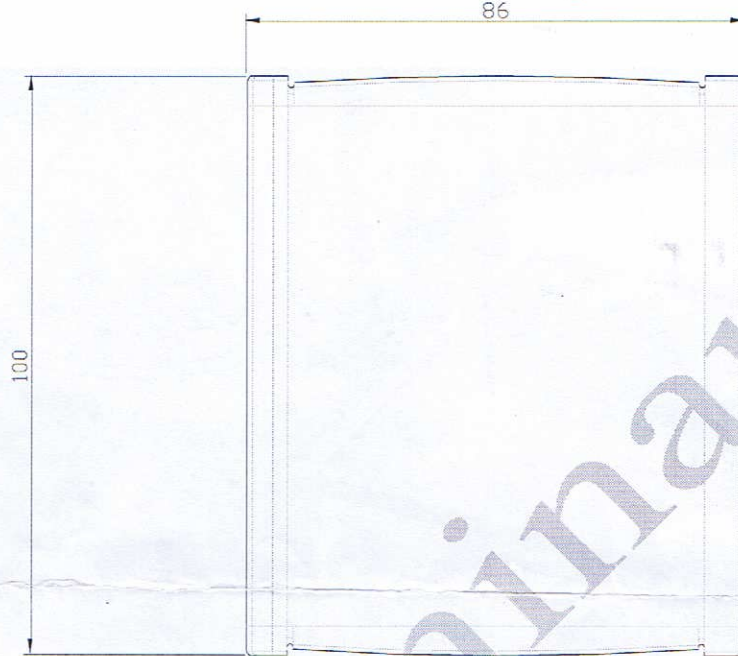
LNF-PS\_2 is a compact power supply designed for LNF's cryogenic Low Noise Amplifiers. The drain voltage is regulated and adjustable within a wide range, and the gate voltage is automatically and continuously adjusted to give a set drain current.  $V_d$ ,  $I_d$  and  $V_g$  can be monitored through banana sockets on the front panel using a multimeter.  $V_d$  and  $I_d$  are set by trim potentiometer on the front panel. The power supply is powered by an external desktop transformer accepting 100-250 VAC, 50- 60 Hz (to the right in the photo above).

### Specifications

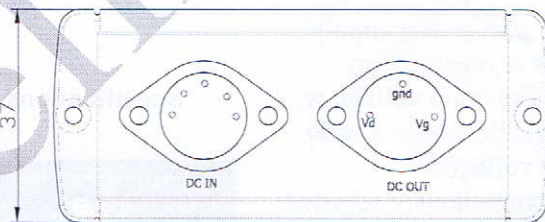
Parameter	Min	Typ	Max
$V_d$	0.0 V		2.0 V
$I_d$	0.0 mA		50 mA
$V_g$	-11.8 V		+11.8 V
$I_g$	-5 mA		+5 mA
<b>Idmon response</b>		0.1V/mA	



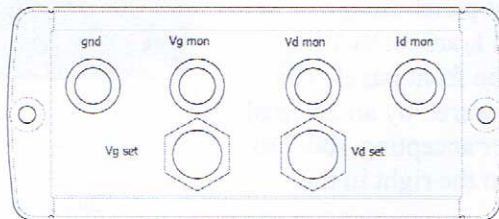
Drawings



Back panel



Front panel



Dimensions in millimeters